



WIL-COR, INC.

Formulators and Manufacturers of Linings, Surfacing Materials, Mortars, Cements, Grouts and Specialty Plastic Products for Industry

P.O. Box 5646 • Pasadena, Texas 77508
(281) 487-6547 • Fax (281) 487-2357

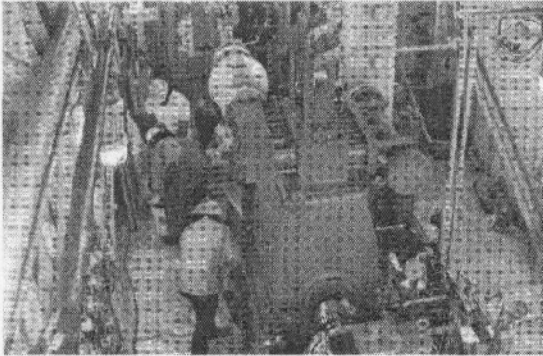
AP-999MP MULTI-PURPOSE EPOXY GROUT

PRODUCT DATA

ARMOR PLATE® 999MP

DESCRIPTION

Armor Plate 999MP is a three-component, high strength, 100% solids, epoxy grouting compound. It is primarily used to grout large machinery, support sole plates and rehabilitate concrete structures. Armor Plate 999MP exhibits early compressive strength, negligible shrinkage and is resistant to mechanical abuse and corrosive attack.



Armor Plate 999 MP is an ideal grouting material for use in these and other applications:

- Equipment grouting for pumps and compressors
- Anchor bolt and rebar grouting
- Repairing spalled concrete
- Rebuilding concrete curbs
- Repairing concrete columns and concrete bases
- Deep pour applications to 12 inches

PHYSICAL PROPERTIES

Color	Gray
Viscosity	Flowable Grout
Pot Life @ 65 °F	5 hrs
77 °F	3.5 hrs
90 °F	2 hrs
Pour Depth (one lift)	12 inches
Maximum Operating Temperature	150 °F
Shrinkage (ASTM C-531)	0.0005 in/in
Compressive Strength (ASTM C-579 / Method B) @ Ambient Temperature	11,800 psi
Tensile Strength (ASTM C-307-61)	2,410 psi
Flexural Strength (ASTM D-790)	4,680 psi

ADVANTAGES

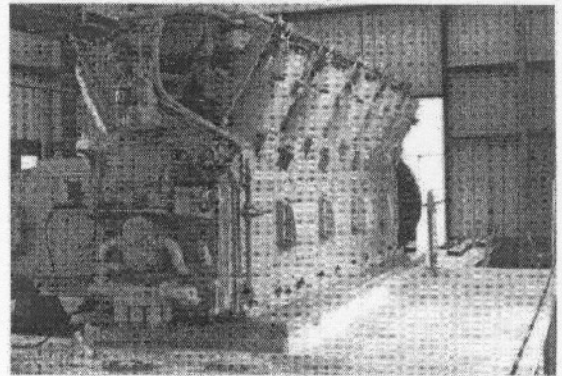
- Easy to handle and place
- No mixing ratios to measure
- Packaged in pre-measured containers
- Grouts machinery in final aligned position
- Low exotherm for deeper pours
- High early strength
- High impact strength
- Superior resistance to fatigue
- Resistance to many chemicals
- Impervious to oil
- Moisture insensitive
- Strong bond to metal and concrete
- Unaffected by weathering and freeze / thaw cycling

CHEMICAL RESISTANCE

Armor Plate 999MP is resistant to alkalis, dilute acids, oils, salts and water. Contact the Wil-Cor, Inc. Technical Department for chemical resistance in specific service conditions.

SURFACE PREPARATION

All surfaces (grout bed, sole plates) should be smooth, clean and free of oil. The mainframe surface should be smooth, bright metal. Sharp frets should be ground smooth and any voids should be filled with Armor Plate 990 Epoxy Putty.



The information contained herein is correct to the best of our knowledge. These recommendations or suggestions in this bulletin are made without guarantee or representation as to results. We suggest that you evaluate these recommendations and suggestions in your own laboratory prior to use. Our responsibility for claims arising from breach of warranty, negligence, or otherwise is limited to the purchase price of the material. Freedom to use any patent owned by Wil-Cor, Inc. or others © 1996 Wil-Cor, Inc. All rights reserved - 96213

B & H DISTRIBUTORS, INC.
9921 Barringer Court
BATON ROUGE, LOUISIANA 70809
Phone (225) 755-7949 1-800-844-5860

MIXING

Armor Plate 999MP is packaged as a three-part, premeasured system of Resin (A), Cure (B), and Aggregate (C).

Resin and cure must be thoroughly mixed before aggregate is added. DO NOT add aggregate before resin and cure are properly mixed.

Mix the AP 999MP according to the following instructions:

1. Add Armor Plate 999MP Cure (part B) to Armor Plate 999MP Resin (part A). DO NOT add Aggregate at this time.
2. Mix Resin and Cure thoroughly for at least 2 minutes. Use an electric mixing blade, a horizontal agitator, or other mechanical equipment suited for producing a homogenous mix.
3. Pour the completely mixed AP 999MP Resin and Cure into a concrete or mortar mixer.
4. Add one-half of the AP 999MP Aggregate (part C) and mix until it is thoroughly wetted.
5. Add the remainder of the Aggregate and mix until all of the aggregate is thoroughly wetted.
6. For smaller batches use a 3/4" drill and mix one (1) gallon with 50 lbs. of Aggregate (part C).
7. To increase flow, solvent approved by Wil-Cor, Inc. may be added.



APPLICATION

Armor Plate 999MP cures quicker than other grouts, but the cure is thermally gentle. This allows thick pours to be made without causing the stress cracks often associated with a hot-curing epoxy grout.

Armor Plate 999MP may be used in any thickness greater than 1/2 inch (12mm); however, individual pours should generally not exceed 12 inches (31 cm) in thickness and 5.0 feet (1.1 m) in length.

CURE AND WORKING TIMES									
Temperature (°F)	100	95	90	85	80	75	70	65	60
Cure Time (hrs)	10	12	15	18	24	30	36	46	56
Working Time (min)	30	35	40	45	50	55	60	70	80

ADDITIONAL INFORMATION

More detailed information regarding surface preparation, mixing and application of Armor Plate 999MP may be found in the Wil-Cor specification CES-999.

LIMITATIONS

Do not use Armor Plate 999MP if base of the operating equipment to be grouted exceeds 150 °F on a continuous basis. If temperatures are greater, use Armor Plate 999 Heavy Equipment Grout.

PACKAGING

Armor Plate 999MP is available in a pre-measured unit containing Component A (Resin), Component B (Cure / Hardener) and Component C (Aggregate), for a total weight per unit of 242 lbs. This unit yields 2.0 cu. ft. of mixed material.

SHELF LIFE

Armor Plate 999MP grout components must be kept dry. Both the epoxy liquid and aggregate must be stored in a dry shelter. Freezing will not harm any of the Armor Plate 999MP components. Parts A, B and C may be stored in sub-zero conditions, such as occur at Prudhoe Bay, Alaska.

- Component A – Minimum 1 year in tightly sealed container
- Component B – Minimum 1 year in tightly sealed container
- Component C – Indefinite if kept dry

CAUTION

- Armor Plate 999MP is a low toxicity system, but allergic reaction may occur in some persons.
- Use Armor Plate 999MP in well ventilated areas and avoid breathing fumes or aggregate dust.
- Avoid skin contact if possible. Gloves and other protective equipment are recommended.
- Use soap and water to thoroughly clean contaminated areas of the body.
- In case of eye contact, thoroughly flush the eyes with water and seek immediate medical attention.

